

PRO RYDE SUSPENSION SYSTEMS

PRO RYDE

EXACTLY THE WAY YOU WANT IT.™

PRO RYDE ADJUSTABLE FRONT LIFT KIT INSTALLATION CHEVROLET/GMC 1500

2007-Up W/JL4 Electronic Suspension

PATENTED

IMPORTANT!

Read **ALL WARNINGS** and information contained in these instructions **PRIOR** to installing this product. **Vehicle Owner MUST** be provided the **IMPORTANT VEHICLE OWNER'S INFORMATION** section of these instructions after installation of this product.

Bill of Materials

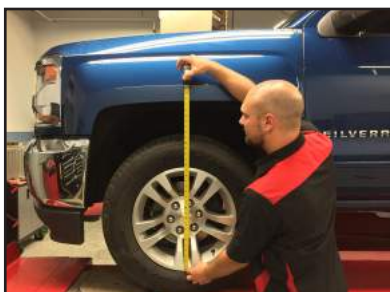
- (1) Installation Instructions & Warnings
- (1) 2-Piece LH Aluminum Lower Strut Spacers
- (1) 2-Piece RH Aluminum Lower Strut Spacers
- (4) 90mm 10.9 Grade Replacement Bolts & Hdw.



ALWAYS WEAR PROPER EYE PROTECTION & USE TOOLS SPECIFIC TO THE JOB!

STEP 1: On a flat, level surface, MEASURE pre-installation ride height, FRONT & REAR, and write down measurements.

Front (L) _____
Front (R) _____
Rear (L) _____
Rear (R) _____



STEP 2: Position vehicle on a stable, flat surface or automotive lift.

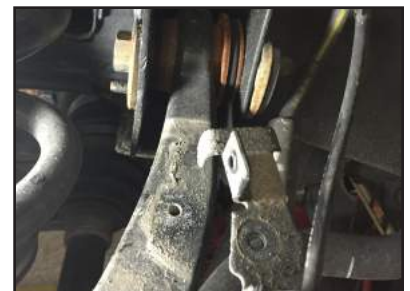
Suspend front wheels, lifting by the frame. Secure with jack stands & wheel chocks. Be sure engine is turned OFF and vehicle is in PARK.



STEP 3: Support lower control arm & spindle assemblies, then remove front wheels.



STEP 4: Disconnect ABS/vacuum line brackets from upper control arm to allow slack.



75-1055G-0816

STEP 5: Disconnect sway bar links at the lower control arm.



STEP 6: Loosen, but don't completely remove, upper ball joint & outer tie rod nuts.



STEP 7: With stud nuts still installed, separate upper ball joints & outer tie rods from their tapers, using a hammer as shown.



STEP 8: Supporting the spindle & brake assembly, completely remove upper ball joint & tie rod end nuts. Then, move assembly & drive-shaft away from strut.



Be sure brake lines have adequate slack, and to properly support brake & spindle assembly.

STEP 9: Disconnect & remove lower strut mounting bolts.



STEP 10: Remove OEM threaded clips from lower strut mounts.



IMPORTANT! Be sure to properly install spacers in the following steps according to "L" (driver's side) and "R" (pass. side) and with the **SLOT** located **NEAREST** the CV driveshaft.



STEP 11: Installing the smaller 1/2" aluminum lower strut spacer will produce a **0.875"** total front lift.



STEP 12: Installing the larger 3/4" aluminum lower strut spacers will produce a **1.25"** total front lift.



STEP 13: Installing both aluminum lower strut spacers together will combine for a **1.75"** total front lift.



STEP 14: Install new lower shock bolts included with this kit, as shown, and tighten to OEM specifications.



STEP 15: Reconnect upper ball joint nut & outer tie rod nuts. **HINT:** The use of a bottle jack and/or pry bar will assist in the reassembly of the ball joint to the knuckle. **BE SURE TO CHECK YOUR WORK,** and that all fasteners have been properly torqued to manufacturer's specs.



STEP 16: Reconnect sway bar link to lower control arm and torque to manufacturer's specifications.



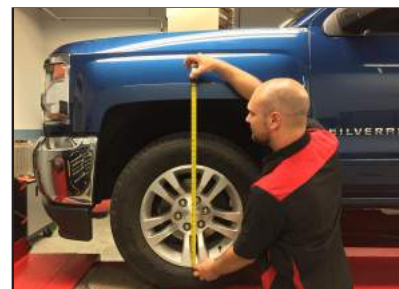
STEP 17: Reconnect ABS/Vacuum line brackets, disconnected in Step 4.



STEP 18: Reinstall tire/wheel assemblies, and check that ALL suspension components and lug nuts have been properly torqued to manufacturer's specs.



STEP 19: Lower the vehicle, jounce suspension and measure ride height of EACH SIDE of the vehicle. Measure from the bottom of the wheel/rim to the lip of the fender.



STEP 20: MAKING FUTURE FRONT RIDE HEIGHT ADJUSTMENTS:

- 1) Lift vehicle by the frame, allowing wheels to hang freely. Secure using jack stands & wheel chocks.
- 2) Loosen upper ball joint stud nut, without completely removing. Break taper between ball joint and knuckle.
- 3) Loosen Outer Tie Rod End nut, without completely removing, then break taper.
- 4) Disconnect Sway Bar Link from lower control arm.
- 5) **LOOSEN Lower Shock bolt on SLOTTED end of U-shaped Lower Strut Spacer & REMOVE Lower Shock bolt on the NON-SLOTTED end. This will allow adjustments without moving CV driveshaft assembly and other suspension components.**
- 6) Install or remove U-shaped Lower Strut Spacers to achieve desired ride height changes.
- 7) Tighten Lower Shock Bolts to OEM specifications.
- 8) Reconnect Upper Ball Joint-to-knuckle, Outer Tie Rod End & Sway Bar Links.

LOWER THE VEHICLE, JOUNCE SUSPENSION, AND MEASURE RIDE HEIGHT. BE SURE VEHICLE IS LEVEL FROM SIDE-TO-SIDE AND AT THE DESIRED RIDE HEIGHT, MAKING ADDITIONAL ADJUSTMENTS AS REQUIRED. **RETORQUE ALL FASTENERS TO OEM SPECS.**



IMPORTANT! Check all fasteners for proper torque. Check to insure there is adequate clearance between all rotating, mobile, fixed and heated members. Check steering for interference and proper working order. Test brake system.

STEP 21: Perform a complete wheel alignment, utilizing a Certified Alignment Technician with experience working on lifted vehicles.



STEP 22: ADJUST HEADLIGHTS to accommodate new front ride height position

Before:



After:



Complete a full 4-corner lift and install a ProRYDE SuperBLOK ADJUSTABLE rear Lift Kit!



IMPORTANT VEHICLE OWNER'S INFORMATION

CHEVROLET/GMC 1500

Patented

Adjusting Lift/Leveling kit after installation

Always wear proper eye protection! Position vehicle on a stable, flat surface and SUSPEND FRONT WHEELS, lifting by the frame with a floor jack or lift jack. Secure frame with jack stands. Chock tires and turn engine OFF prior to adjustment!

- 1) Loosen upper ball joint stud nut, without completely removing. Break taper between ball joint and knuckle.
- 2) Loosen Outer Tie Rod End nut, without completely removing, then break taper.
- 3) Disconnect Sway Bar Link from lower control arm.
- 4) LOOSEN Lower Shock bolt on SLOTTED end of U-shaped Lower Strut Spacer & REMOVE Lower Shock bolt on the NON-SLOTTED end. This will allow adjustments without moving CV driveshaft assembly and other suspension components.**
- 5) Install or remove U-shaped Lower Strut Spacers to achieve desired ride height changes.
- 6) Tighten Lower Shock Bolts to OEM specifications.
- 7) Reconnect Upper Ball Joint-to-knuckle, Outer Tie Rod End & Sway Bar Links.

LOWER THE VEHICLE, JOUNCE SUSPENSION, AND MEASURE RIDE HEIGHT. BE SURE VEHICLE IS LEVEL FROM SIDE-TO-SIDE AND AT THE DESIRED RIDE HEIGHT, MAKING ADDITIONAL ADJUSTMENTS AS REQUIRED. **RETORQUE ALL FASTENERS TO OEM SPECIFICATIONS!**

Under no circumstances should this product be altered to adjust ride height beyond its design limits. Remember! Any change to ride height will affect vehicle's Wheel Alignment and Handling! Always realign the vehicle any time ride height is adjusted, and be sure to adjust headlights as necessary.

WARNING

This product should only be installed and adjusted by an ASE certified professional mechanic with proper tools and safety equipment.

Installation of this product modifies vehicle ride height. The driver of this vehicle should avoid unnecessary or abrupt maneuvers, sharp turns and other driving conditions that could lead to rollover or other serious accident. This product may affect vehicle center of gravity resulting in less than the original OE stability characteristics.

The manufacturer of this product releases itself from any liability or consequence, inclusive but not limited to personal injury, failure of components or damage to vehicle or person as a result of installing this product.

Warranties may be declined for any parts installed by any person other than an ASE certified professional. No warranty will be made for any other OEM or aftermarket components that may be affected by the installation of this product either in use or during installation. This kit is intended for use on stock suspensions WITHOUT any previous modifications whatsoever. Installation of this kit in conjunction with other aftermarket products will be done at vehicle owner's own risk, and voids any and all warranties.

Installation of this part MAY limit or void some vehicle manufacturer's warranties!

ALWAYS DRIVE SAFELY, REDUCE SPEED, AND WEAR YOUR SEAT BELT.

LIMITED LIFETIME WARRANTY

This product is warranted to be free of defects in materials and workmanship to the original purchaser on the vehicle in which it is originally installed. This warranty does not cover loss of time, labor, or any other components as a result of damage. This warranty may be void if this product is installed by any person other than an ASE certified professional.